



ET12KX ET12K



**ELECTRIC/HYDRAULIC
12,000 FT/LB CRANE**

Featuring Power Rotation, Power Boom Elevation and Manual or Power Extension

FEATURES

- ◆ 3500 LB MAXIMUM LIFTING CAPACITY
- ◆ 12,000 FT/LB MOMENT RATING
- ◆ ELECTRIC/HYDRAULIC POWER
- ◆ MANUAL OR HYDRAULIC BOOM EXTENSION 7' - 11'
- ◆ MANUAL BOOM EXTENSION 11' - 15'
- ◆ 100% CONTINUOUS - 360° POWER ROTATION
- ◆ MEETS ANSI B30.5 SAFETY STANDARDS
- ◆ MEETS OSHA 1910.180 REQUIREMENTS

STANDARD EQUIPMENT

- ◆ CAPACITY OVERLOAD SHUT-OFF SYSTEM
- ◆ ANTI-TWO BLOCKING
- ◆ 65' OF 1/4" AIRCRAFT-QUALITY WIRE ROPE
- ◆ 25' CORDED REMOTE
- ◆ SNATCH BLOCK WITH SWIVEL HOOK SAFETY LATCH.
- ◆ MASTER DISCONNECT SWITCH
- ◆ 25' X #2 GA BATTERY CABLE
- ◆ CABLE OVERHAUL WEIGHT

OPTIONAL EQUIPMENT

- ◆ RADIO REMOTE CONTROLS
- ◆ MANUAL OUTRIGGER PACKAGES
- ◆ FOLD AWAY & SIDE BRACKET TYPE JACKLEGS
- ◆ MOUNTING PEDESTAL FOR PLATFORM BODIES
- ◆ BOOM RESTS

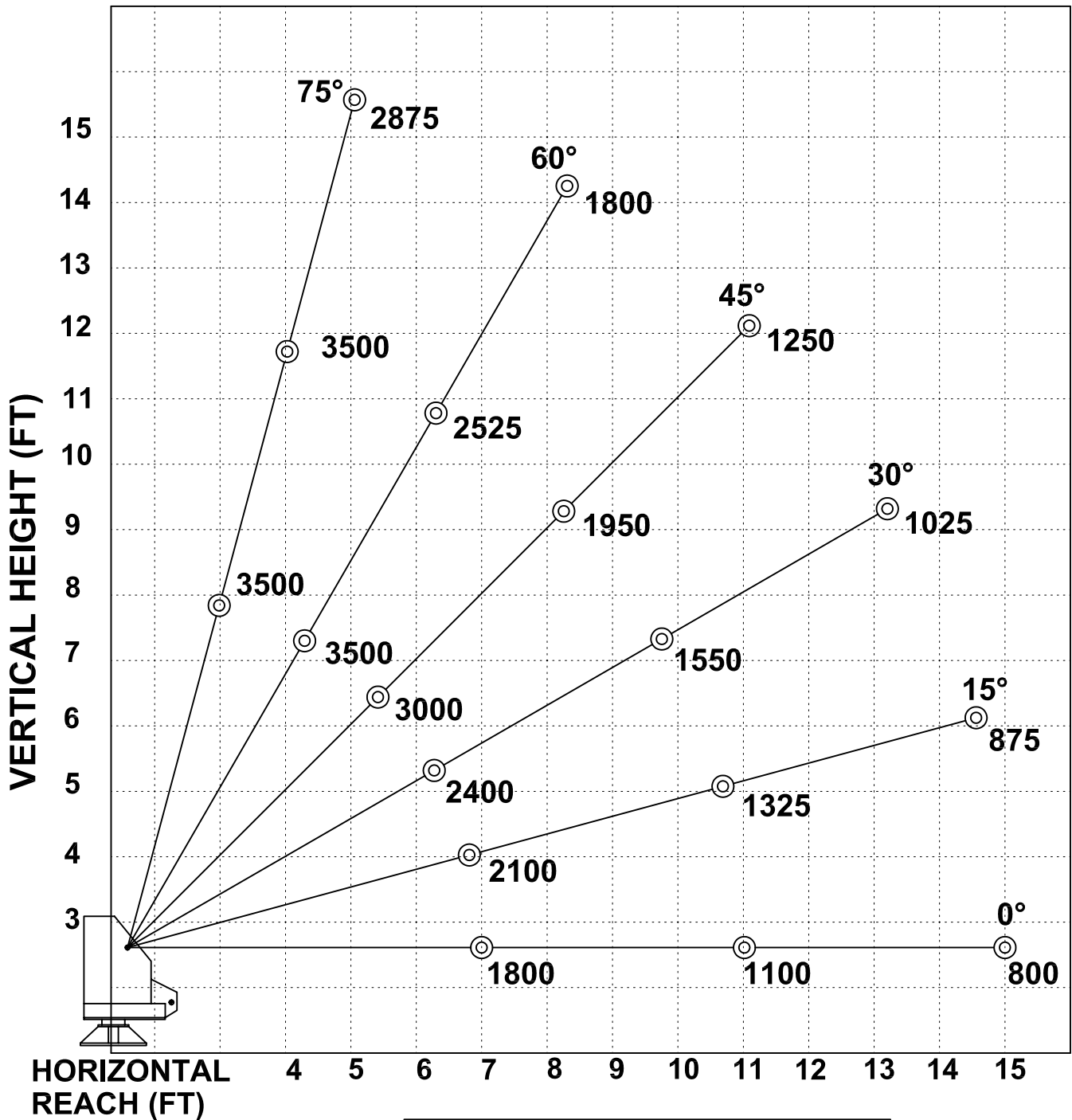
LIFTING CAPACITIES

REACH - FT	LBS
4'	3,500
7'	1,800
11'	1100
15'	800

MINIMUM REQUIREMENTS

- ◆ 10,000 LB GVWR CHASSIS
- ◆ OUTRIGGERS
- ◆ ELECTRICAL POWER SOURCE - 12VDC

ET12K(X) MAXIMUM CAPACITY CHART



**MUST USE SNATCH BLOCK
FOR LOADS OF 1750 LBS.
AND GREATER**