

CE6K
ELECTRIC 6,000 FT/LBS.
MAST CRANE

*All models feature manual rotation and elevation.
Available with your choice of booms, mast heights,
and winches to meet a variety of lifting needs.*

FEATURES

- ◆ 2000 lbs. maximum capacity at 3'
(1500 lbs. with 120V AC winch)
- ◆ 3'-5' manual boom, optional 4'-7' boom.
- ◆ 3 boom elevations (20°, 40°, 60°).
- ◆ Rotation band brake with unlimited 360° positioning.
- ◆ 10" x 10" base plate with 7-5/8" x 7-5/8" bolt pattern.

STANDARD WINCH FEATURES

- ◆ 3/16" x 35' aircraft grade wire rope, 4200 lbs. breaking strength.
- ◆ 12V DC permanent magnet, 1.3 HP motor.
- ◆ Planetary geartrain with 159.1 reduction.
- ◆ Wrap spring brake.

<u>LOAD</u>	<u>LINE SPEED-FT/MIN</u>	<u>AMP DRAW</u>
0	26	30
1000 lbs.	15	80
2000 lbs.	7	80

WINCH FEATURES

- ◆ 3/16" x 35' aircraft grade wire rope, 4200 lbs. breaking strength.
- ◆ 12' removable remote control pendant.
- ◆ 25' x #4GA high current battery cable.

OPTIONS

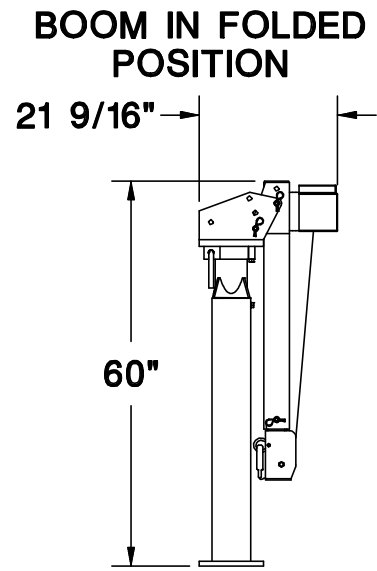
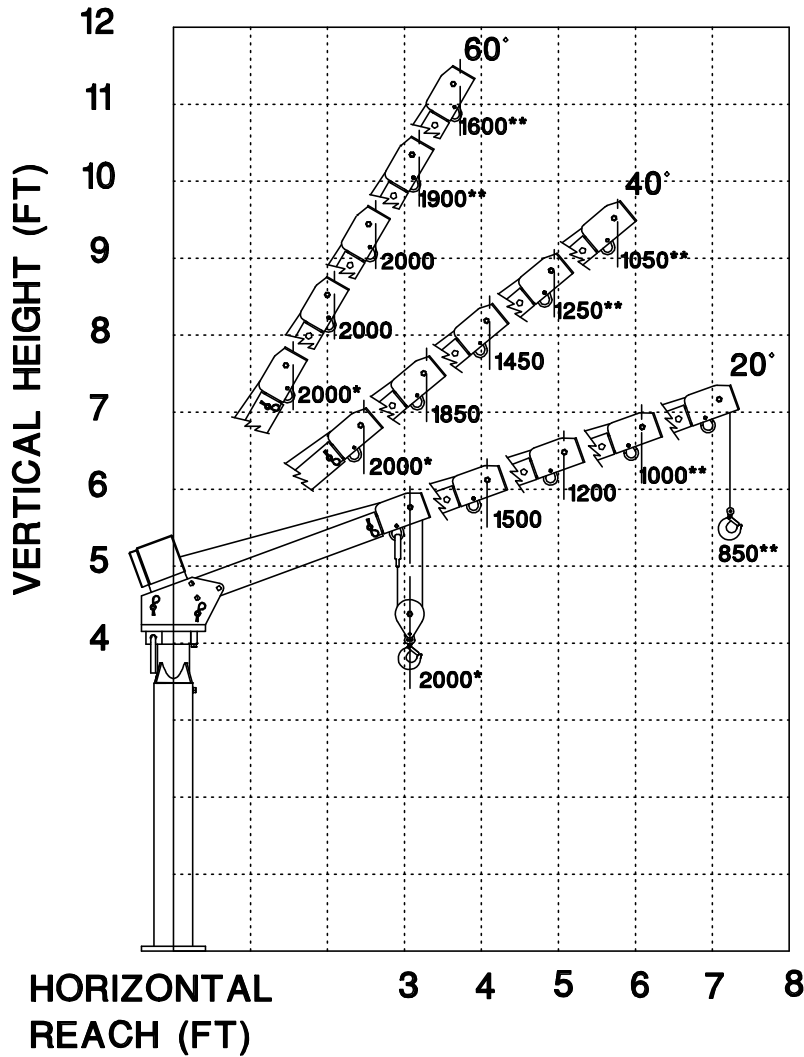
- ◆ Short mast for utility body mounting.
- ◆ 110V AC winch (1500 lb. maximum capacity).
- ◆ Outriggers for all style bodies.
- ◆ Master disconnect switch.
- ◆ Circuit breaker.

HEAVY DUTY WINCH FEATURES

- ◆ 3/16" x 35' aircraft grade wire rope, 4200 lbs. breaking strength.
- ◆ 12V DC permanent magnet, 1.5 HP motor.
- ◆ 3 stage planetary geartrain with 216.1 reduction.
- ◆ Dual load applied and dynamic braking system.
- ◆ 3 1/2" diameter drum meets ANSI B30.5 specifications.

<u>LOAD</u>	<u>LINE SPEED-FT/MIN</u>	<u>AMP DRAW</u>
0	26	30
1000 lbs.	18	115
2000 lbs.	9	115

CE6K - 3-5 FT AND 4-7 FT BOOM MAXIMUM CAPACITY CHART

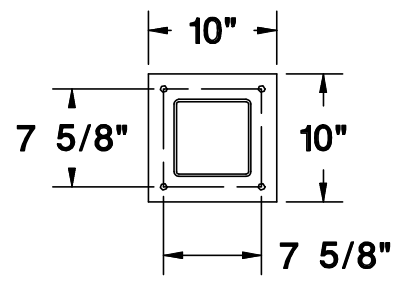


* 3-5 FT BOOM ONLY
** 4-7 FT BOOM ONLY

MUST USE SNATCH BLOCK FOR LOADS GREATER THAN 1000 LBS.

MAXIMUM CAPACITY OF 120V AC WINCH IS 1500 LBS.

BASEPLATE DIMENSIONS



TITLE	DATE	SECTION
CAPACITY CHART	5-27-99B	-
CE6K	SUPERSEDES 4-29-99A	19680