



ET18KX



**ELECTRIC/HYDRAULIC
18,000 FT/LB CRANE**

Featuring Power Rotation, Power Boom Elevation and Power Extension

FEATURES

- ◆ 4,500 LB MAXIMUM LIFTING CAPACITY
- ◆ 18,000 FT/LB MOMENT RATING
- ◆ ELECTRIC/HYDRAULIC POWER
- ◆ POWER BOOM EXTENSION 8' – 12'
- ◆ MANUAL BOOM EXTENSION 12' – 16'
- ◆ POWER ROTATION: CONTINUOUS - 360°
- ◆ MEETS ANSI B30.5 SAFETY STANDARDS
- ◆ MEETS OSHA 1910.180 REQUIREMENTS

STANDARD EQUIPMENT

- ◆ CAPACITY OVERLOAD SHUT-OFF SYSTEM
- ◆ ANTI-TWO BLOCKING
- ◆ 80' OF 5/16" WIRE ROPE WITH SAFETY LATCH
- ◆ 25' REMOTE CONTROL PENDANT
- ◆ SNATCH BLOCK WITH SWIVEL HOOK SAFETY LATCH.
- ◆ MASTER DISCONNECT SWITCH
- ◆ 25' X #2 GA BATTERY CABLE

OPTIONAL EQUIPMENT

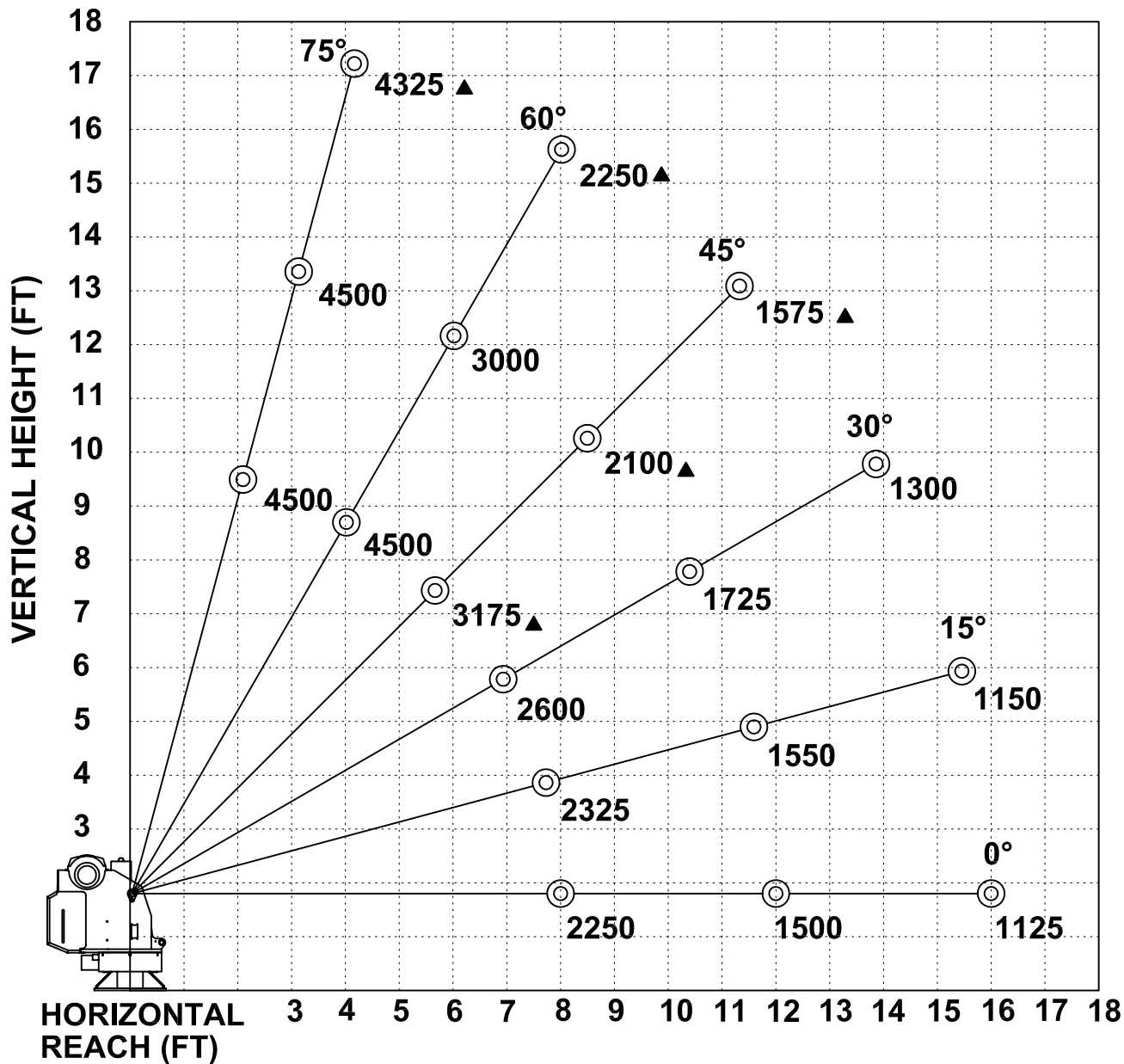
- ◆ RADIO REMOTE CONTROLS
- ◆ HYDRAULIC & MANUAL OUTRIGGER PACKAGES
- ◆ FOLD AWAY & SIDE BRACKET TYPE JACKLEGS
- ◆ MOUNTING PEDESTAL FOR PLATFORM BODIES
- ◆ BOOM RESTS

LIFTING CAPACITIES	
REACH - FT	LBS
4'	4,500
8'	2,250
12'	1,500
16'	1,125

MINIMUM REQUIREMENTS

- ◆ 11,000 LB GVWR CHASSIS
- ◆ OUTRIGGERS
- ◆ ELECTRICAL POWER SOURCE - 12VDC

ET/HT18K(X) - 8-12-16 BOOM MAXIMUM CAPACITY CHART



**MUST USE SNATCH BLOCK
FOR LOADS OF 2250 LBS.
AND GREATER**