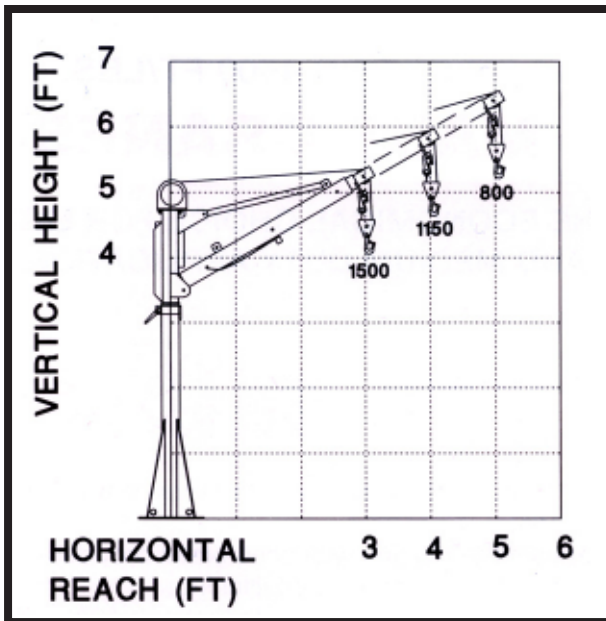


CE1500FB
ELECTRIC 4,500 FT/LBS.
MAST CRANE

THE ECONOICAL CHOICE FOR LIGHT AND MEDIUM DUTY APPLICATIONS



FEATURES

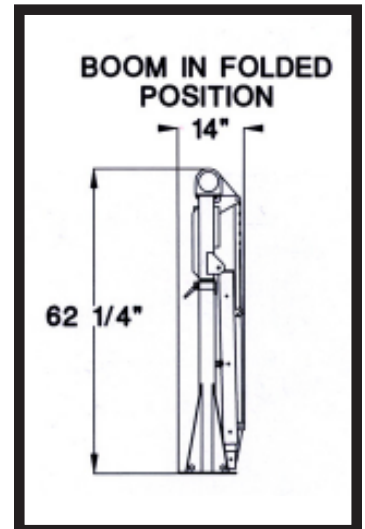
- ◆ Maximum Capacity: 1500 lbs. @ 3'
1150 lbs. @ 4'
800 lbs. @ 5'
- ◆ 3'-5' manual extension boom folds for compact storage.
- ◆ Manual 360° rotation with band brake provides unlimited controlled load positioning.
- ◆ Integrated surface mounting socket with 12" x 12" base plate.

WINCH FEATURES

- ◆ 12 Volt DC 1.3 HP motor.
- ◆ Planetary geartrain with 123:1 reduction.
- ◆ Dynamic motor braking for controlled load lowering.
- ◆ 3/16" x 25' aircraft grade wire rope with 4200 lbs. breaking strength.
- ◆ Wire rope tensioner minimizes drum tangles.
- ◆ Snatch block with swivel hook and safety latch for maximum capacity loads.
- ◆ Pistol grip, removable pendant control with 12' cord.
- ◆ 80 AMP circuit breaker protects motor.

OPTIONS

- ◆ 120 Volt AC 1.3 HP motor.
 - Intermittent duty .6 HP motor.
 - Planetary geartrain with 148:1 reduction.
 - 5/32" x 45' aircraft grade wire rope.
 - Hard wired pendant control with 6' cord.
- ◆ Master disconnect switch for equipment protection.



WARNING: These products are not passenger lifts. They are not designed or intended to be used to lift, support or otherwise transport personnel.