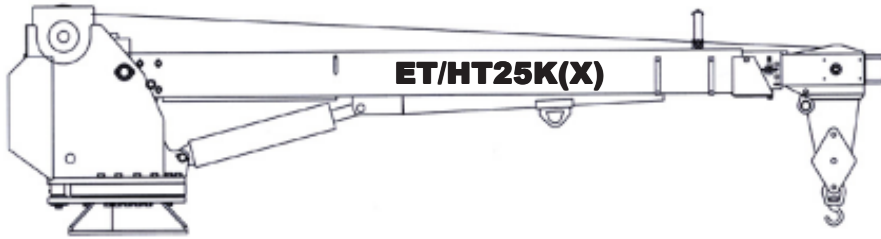


VENTURO

TRUCK MOUNTED CRANES

ET25K(X) HT25K(X)



**ELECTRIC/HYDRAULIC
FULL HYDRAULIC
25,000 FT/LB CRANE**

Featuring Power Rotation, Power Boom Elevation and your choice of Manual Extension (ET25K) or Power Extension (ET25KX).

FEATURES

- ◆ Boom Length 10-16-20 ft.
 - (25K) 10 ft. primary boom with 6 ft. manual extension to 16 ft. and 4 ft. manual extension to 20 ft.
 - (25KX) 10 ft. primary boom with 6 ft. HYDRAULIC extension to 16 ft. and 4 ft. manual extension to 20 ft.
- ◆ Available in your choice of Venturo electric powered high efficient 5,000 lb. winch with heavy-duty self-locking bronze worm gear system and built-in brake to prevent coasting (ET Series) or full hydraulic high efficient brake valve and multi-disc wet brake with sprag (HT Series). (ANSI B30.5)
- ◆ Power Rotation – 360° continuous electric rotation with precision braking for maximum control of load positioning (ET Series) or 400° rotation with cross over relief valve (HT Series).
- ◆ Load Holding Check Valves on elevation and extension cylinders. (ANSI B30.5)
- ◆ Remote Control Pendant – environmentally sealed switches with 24 ft. cord and quick disconnect switch.
- ◆ Pressure Compensated Flow Control Valves – elevation and extension cylinders.

Boom Length	Reach - Ft. Capacity - Lbs.			
	5'	10'	16'	20'
10'	5000	2500	-	-
16'	4700	2700	1450	-
20'	4300	2300	1575	1050

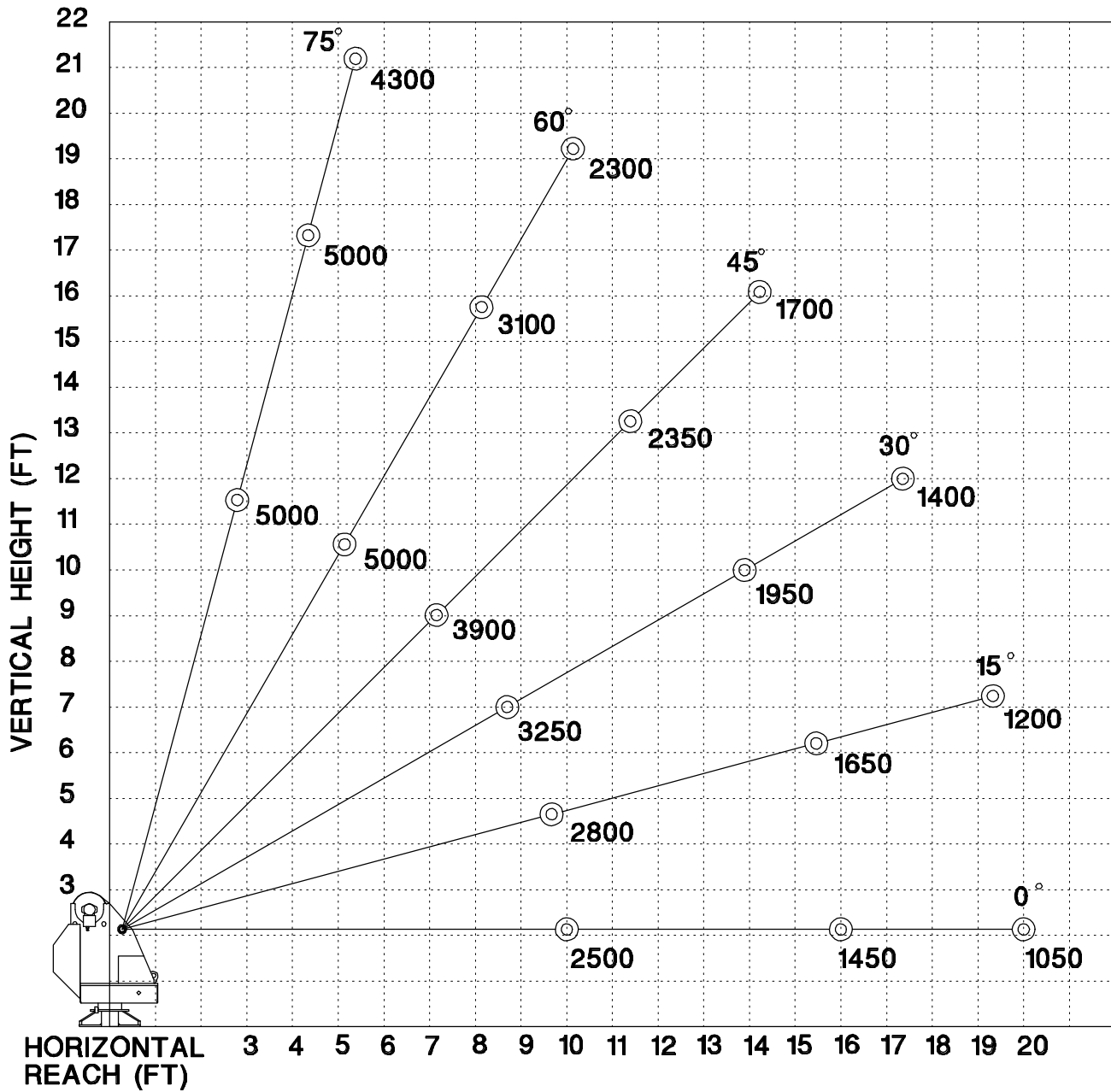
STANDARD EQUIPMENT

- ◆ Anti-Two Blocking (ANSI B30.5)
- ◆ Moment Overload Shut Off Sensor (ANSI B30.5)
- ◆ 80' of 5/16" diameter 7 x 19 galvanized aircraft wire rope (ANSI B30.5).
- ◆ Snatch Block with Swivel Hook Safety Latch. Sheave diameter 18 times wire rope diameter (ANSI B30.5).
- ◆ Master Disconnect Switch (ET Series).
- ◆ Battery Cable 25' plus 4' from crane to disconnect switch.

OPTIONAL EQUIPMENT

- ◆ Pullout Outrigger Systems-Manual or Hydraulic
- ◆ Side and Fold Away Manual Outriggers
- ◆ Mounting Pedestals
- ◆ Direct Mount Pump and Reservoir (HT Series)

ET/HT25K(X) - 10-16-20 BOOM MAXIMUM CAPACITY CHART



**MUST USE SNATCH BLOCK
FOR LOADS OF 2500 LBS.
AND GREATER**